

Community Liaison Programs: Organizing Neighborhoods for Wildfire



Did You Know?

COMMUNITY LIAISON PROGRAMS (CLPs) HAVE MANY PROVEN BENEFITS, WITH ROOTS IN CALIFORNIA'S SALMON RIVER WATERSHED.

- A CLP creates a network that brings neighbors together, increasing community connections and cohesion
- A CLP incorporates local knowledge into incident response and decision making, and can increase the effectiveness of emergency responders
- A CLP often raises the training level and capacity in a community, leading to greater self sufficiency and resiliency



A CLP establishes community points of contact to serve as information links and advocates before, during, and after an incident or emergency that requires response. Important Aspects of a CLP include:

Information Sharing

- CLPs are a two-way information pipeline:

INCIDENT MANAGEMENT
TEAMS



COMMUNITIES

- Neighborhood social media and e-mail updates for residents

Inventorizing and Mapping Community Assets

- Water, Fuel storage
- Vulnerable residents
- Safe zones & Evac routes
- Skills, resources and tools
- Contact info for residents and agencies
- Past fire and mitigation activity

Improved Evacuation Planning

- Assists Incident Management Teams (IMTs) and LEOs
- Trusted local face makes a huge difference in evacuation process, timelines, and outcomes
- Good understanding of local geography and topography



A CLP has a unique and important role to play in improving local outcomes.

Shared Info Binder

- Introduces and Legitimizes CLP individual and process with local agencies
- Provides current, accurate contact info for agency and liaison contacts
- Conveys local knowledge, resources, and concerns
- Helps IMTs to be more effective

IMT Briefings

- Gives community liaison a seat at the table where management discussion and decisions are happening
- Facilitates faster dissemination of info to public and IMT
- Helps to fact-check and debunk rumors

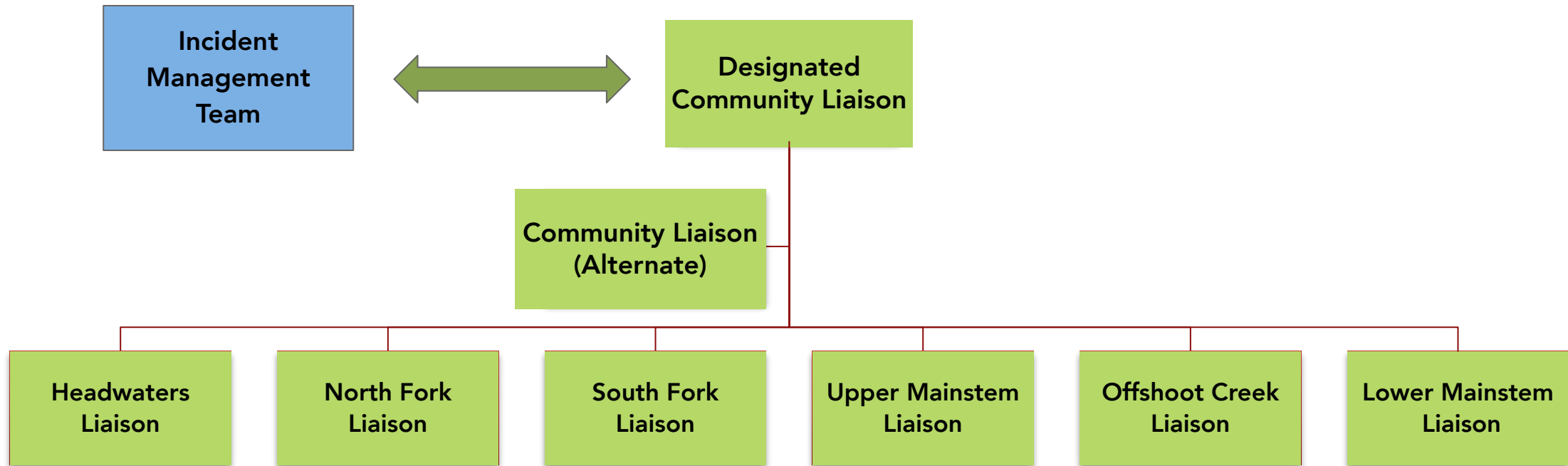
Phone Tree

- Securely collects and stores contact information for community deployment during disasters or events
- Saves time during incidents
- Increases connectivity between neighbors
- Promotes mutual aid and info/resource sharing



Community Liaison Org Chart

— Residential Watershed Area Example



A CLP is a vehicle for any preparedness or resilience project where you live

Preparedness

- Emergency planning
- Home and community risk assessments
- Home hardening
- Firewise Communities
- Training
- Capacity building
- Fire Adapted Education

Restoration

- Fuels reduction
- Access to funding and expertise for local landowners
- creation of forest management plans
- Increased ecological health of soil and water
- prescribed burns

Disaster Response

- Access to timely reliable information
- Timely emergency notifications
- Evacuation planning
- Increased community reliance and mutual aid
- Improved government resident interface



At the end of the day, we have each other.

Whether or not Incident Management agencies are able to respond, neighbors can often be in the best position to help, precisely because they know each other, where they live, and what sort of help is most needed.

